

NOTES:

- THE PRODUCT DETAILED IN THIS DRAWING IS FMR (FIRE MARSHAL REGULATION IN JAPAN) COMPLIANT, AND THE PARTS WHICH ARE DIRECTLY EXPOSED TO OUTSIDE OF THE UNIT ARE MODIFIED WITH UNIQUE ONES TO COMPLY WITH FMR. THE ACCEPTANCE CRITERIA OF FMR ARE AS OUTLINED BELOW, AND THIS PRODUCT COMPLIES WITH THEM.
 - PARTS WHICH ARE DIRECTLY EXPOSED TO OUTSIDE OF THE UNIT SHALL BE DESIGNED WITH STEEL SHEETS WITH MINIMUM THICKNESS OF 1.6MM AS SPECIFIED IN FMR.
 - PERFORATIONS WHICH ARE OPENED ON THE OUTER SHEET METALS SHALL BE DESIGNED WITH LIMITED AREA AND UNIQUE DESIGN PATTERN SPECIFIED IN FMR.
 - ELECTRICAL/ ELECTRONIC DEVICES MOUNTED ON THE OUTER PANELS SHALL BE SHIELDED AGAINST FIRE PROPAGATION.
- INSTALLATION SHALL COMPLY WITH ALL APPLICABLE NATIONAL AND LOCAL ELECTRICAL REGULATIONS.
- REFER TO PRODUCT DOCUMENTATION FOR ADDITIONAL DETAILS PRIOR TO INSTALLATION AND SITE PREPARATION WORK.
- ALL DIMENSIONS ARE IN MILLIMETERS [INCHES]. ALL DIMENSIONS EXCLUDES SCREW PROJECTIONS OUTSIDE THE ENCLOSURE
- CLEARANCE DIMENSIONS ARE MEANT FOR AIRFLOW AND SERVICE ACCESS ONLY. CONSULT WITH THE LOCAL SAFETY CODES AND STANDARDS FOR ADDITIONAL REQUIREMENTS.
- CABLE ENTRY IS FROM BOTTOM/REAR OF THE UNIT.
FOR ADJACENT BATTERY CABINET CABLE ENTRY IS FROM LEFT. (BATTERY CABINET SHOULD BE MOUNTED LEFT SIDE TO UPS).
FOR ADJACENT MAINTENANCE BYPASS IT IS FROM THE RIGHT OF UNIT. (MBP SHOULD BE MOUNTED RIGHT SIDE TO UPS).
- REFER TO THE TABLE-1 FOR APPROXIMATE WEIGHT OF THE FMR COMPLIANT PRODUCT.
- OPERATING TEMPERATURE: 0°C TO 40°C [32°F TO 104°F].
- DOOR IS INSERTED USING HOOKS AT THE BOTTOM AND LOCKED AT THE TOP. CAN BE COMPLETELY REMOVABLE.
- COLOR: RAL 9003, GLOSS LEVEL 85%.
- THIS INFORMATION PROVIDES APPROXIMATE CENTER OF GRAVITY CALCULATION
- DRILL/PUNCH HOLES IN PLATE. REMOVE PLATE FROM CABINET BEFORE DRILLING/PUNCHING.
- PROTECTION CLASS: IP21. OPTIONAL PROTECTION CLASS IP22 (SKU#GVSOPT026).

TABLE-1

WEIGHT DATA		
SKU NUMBER	UPS RATING (kW)	WEIGHT OF UNIT in kg [lb]
GVSUPS50KHS	50	236 [520.3]
GVSUPS60KHS	60	268 [590.8]
GVSUPS80KHS	80	280 [617.3]
GVSUPS100KHS	100	
GVSUPS120KHS / GVSUPS120KHINS	120	308 [679.0]
GVSUPS150KHS / GVSUPS150KHINS	150	320 [705.5]
GVSUPS50K150HS	50 kW UPS EXPANDABLE TO 60 / 80 / 100 / 120 / 150kW (REFER TO THE RESPECTIVE ABOVE APPLICABLE RATINGS ROW AS PER THE EXPANSION	

THIS DRAWING AND SPECIFICATIONS HEREIN ARE THE PROPERTY OF SCHNEIDER ELECTRIC AND SHALL NOT BE COPIED, REPRODUCED OR USED IN WHOLE OR IN PART, AS THE BASIS FOR THE MANUFACTURE OR SALE OF ITEMS WITHOUT WRITTEN PERMISSION FROM SCHNEIDER ELECTRIC. THIS DRAWING IS BASED UPON LATEST AVAILABLE INFORMATION AND IS SUBJECT TO CHANGE WITHOUT NOTICE.

Schneider Electric

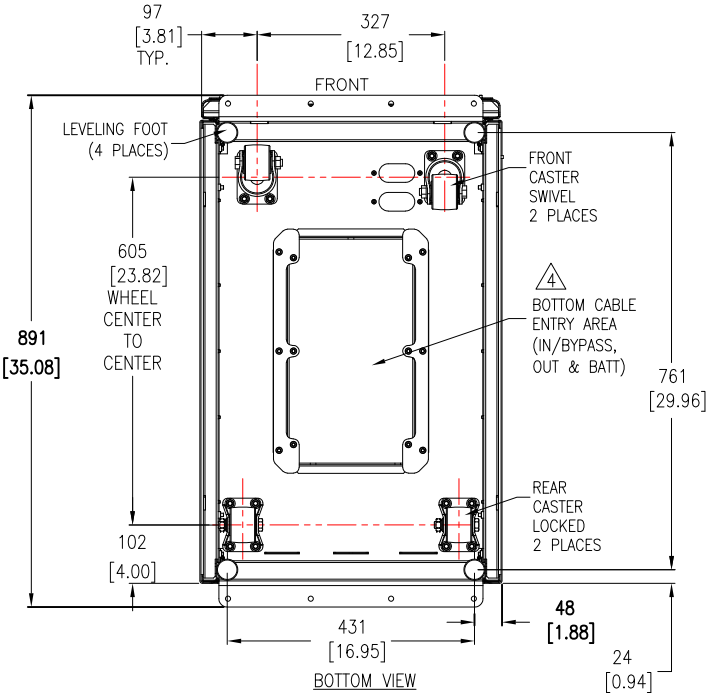
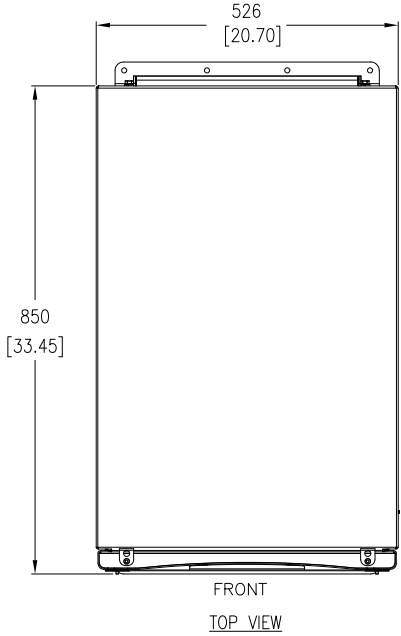
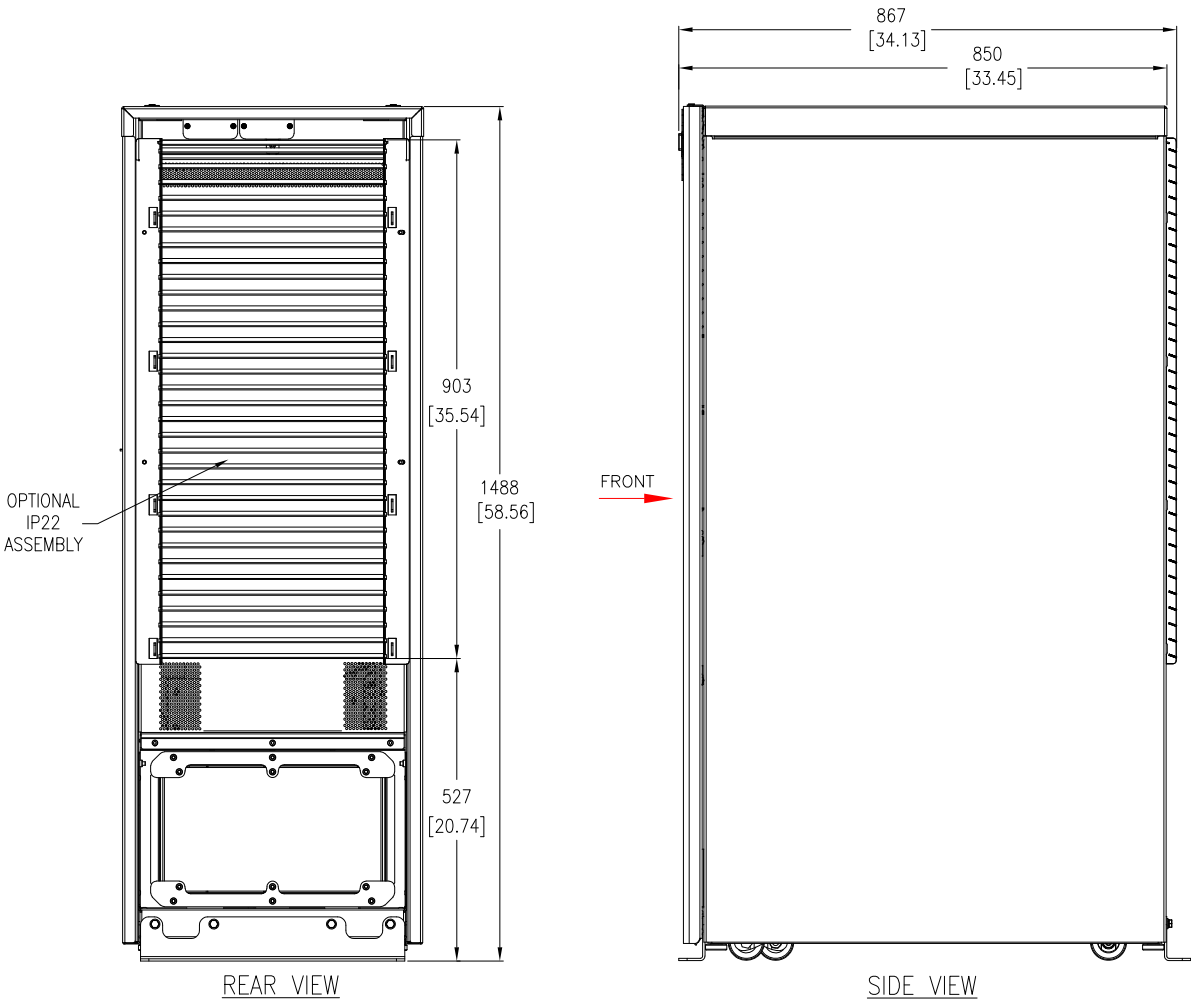
TITLE: Galaxy VS
UPS 50kW, SCALABLE TO 150kW (FMR COMPLIANT)
Input: 380/400/415V, 3PH, 50Hz, SINGLE/DUAL MAINS
Output: 380/400/415V, 3PH, 50Hz
GENERAL ARRANGEMENT (WITH FMR KIT-GVSOPT043)

DWG NO: GVSUPS50K150HS-FMR
DRAWN: JAYAPRAKASH
ENGINEER: MUTHUVEL S
APPROVED: TAKESHI YAMAMOTO

REV: 0
20-DEC-22
03-JAN-23
03-JAN-23
FIRST ANGLE PROJECTION

PROJECT: SUBMITTAL DRAWINGS SHEET 1 OF 5

REAR & SIDE VIEWS WITH OPTIONAL IP22 PROTECTION (SKU/CR#GVSOPT026)



- NOTES:
1. INSTALLATION SHALL COMPLY WITH ALL APPLICABLE NATIONAL AND LOCAL ELECTRICAL REGULATIONS.
 2. REFER TO PRODUCT DOCUMENTATION FOR ADDITIONAL DETAILS PRIOR TO INSTALLATION AND SITE PREPARATION WORK.
 3. ALL DIMENSIONS ARE IN MILLIMETERS [INCHES]. ALL DIMENSIONS EXCLUDES SCREW PROJECTIONS OUTSIDE THE ENCLOSURE.
- ⚠️ DRILL/PUNCH HOLES IN PLATE. REMOVE PLATE FROM CABINET BEFORE DRILLING/PUNCHING

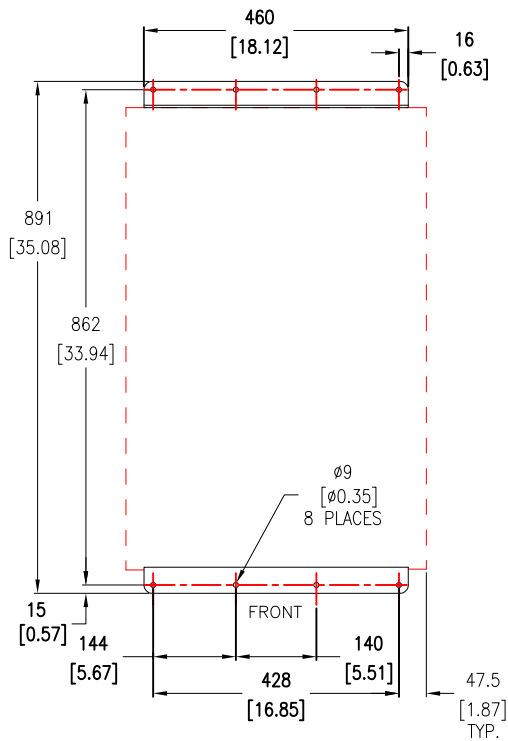
THIS DRAWING AND SPECIFICATIONS HEREIN ARE THE PROPERTY OF SCHNEIDER ELECTRIC AND SHALL NOT BE COPIED, REPRODUCED OR USED IN WHOLE OR IN PART, AS THE BASIS FOR THE MANUFACTURE OR SALE OF ITEMS WITHOUT WRITTEN PERMISSION FROM SCHNEIDER ELECTRIC. THIS DRAWING IS BASED UPON LATEST AVAILABLE INFORMATION AND IS SUBJECT TO CHANGE WITHOUT NOTICE.



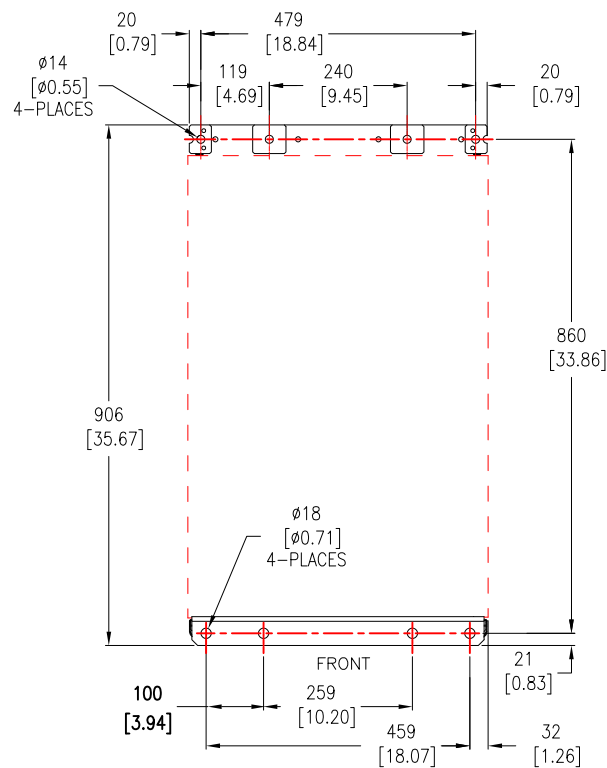
TITLE: Galaxy VS
UPS 50kW, SCALABLE TO 150kW (FMR COMPLIANT)
Input: 380/400/415V, 3PH, 50Hz, SINGLE/DUAL MAINS
Output: 380/400/415V, 3PH, 50Hz
IP22 KIT, TOP & BOTTOM VIEWS (WITH FMR KIT-GVSOPT043)
PROJECT: SUBMITTAL DRAWINGS SHEET 2 OF 5

DWG NO: GVSUPS50K150HS-FMR
DRAWN: JAYAPRAKASH
ENGINEER: MUTHUVEL S
APPROVED: TAKESHI YAMAMOTO

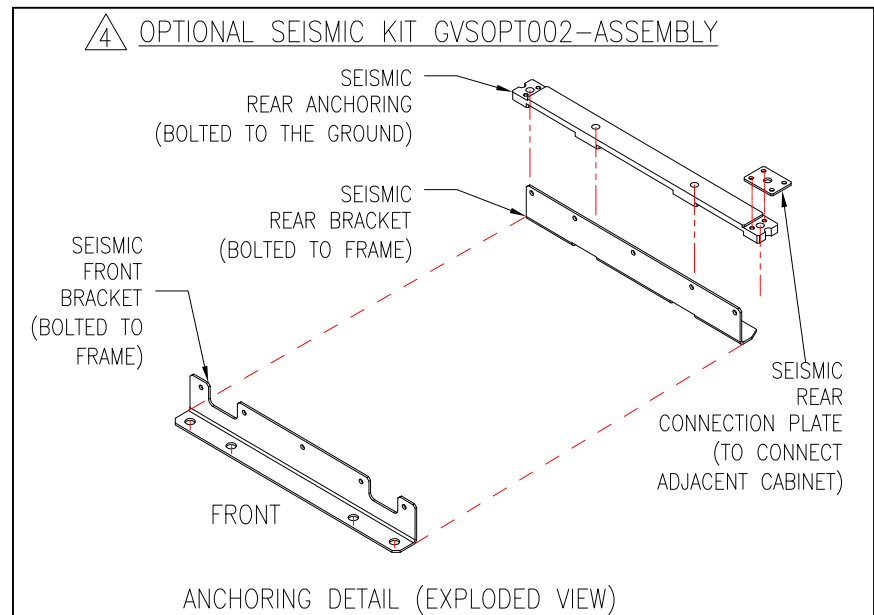
REV. 0
20-DEC-22
03-JAN-23
03-JAN-23
FIRST ANGLE PROJECTION



TRANSPORTATION BRACKET
ANCHORING DETAILS (LOOKING FROM TOP)



4 OPTIONAL SEISMIC KIT (GVSOPT002)
ANCHORING DETAILS (LOOKING FROM TOP)



ANCHORING DETAIL (EXPLODED VIEW)

- NOTES:
1. INSTALLATION SHALL COMPLY WITH ALL APPLICABLE NATIONAL AND LOCAL ELECTRICAL REGULATIONS.
 2. REFER TO PRODUCT DOCUMENTATION FOR ADDITIONAL DETAILS PRIOR TO INSTALLATION AND SITE PREPARATION WORK.
 3. ALL DIMENSIONS ARE IN MILLIMETERS [INCHES]. ALL DIMENSIONS EXCLUDES SCREW PROJECTIONS OUTSIDE THE ENCLOSURE
 4. SEISMIC LOCATION: OPTIONAL SEISMIC KIT IS REQUIRED (GVSOPT002).
 5. NON-SEISMIC LOCATION: THE FRONT AND REAR TRANSPORTATION BRACKET CAN BE USED.
 6. SOME STRUCTURAL DETAILS HAVE BEEN OMITTED FOR THE PURPOSE OF CLARITY.

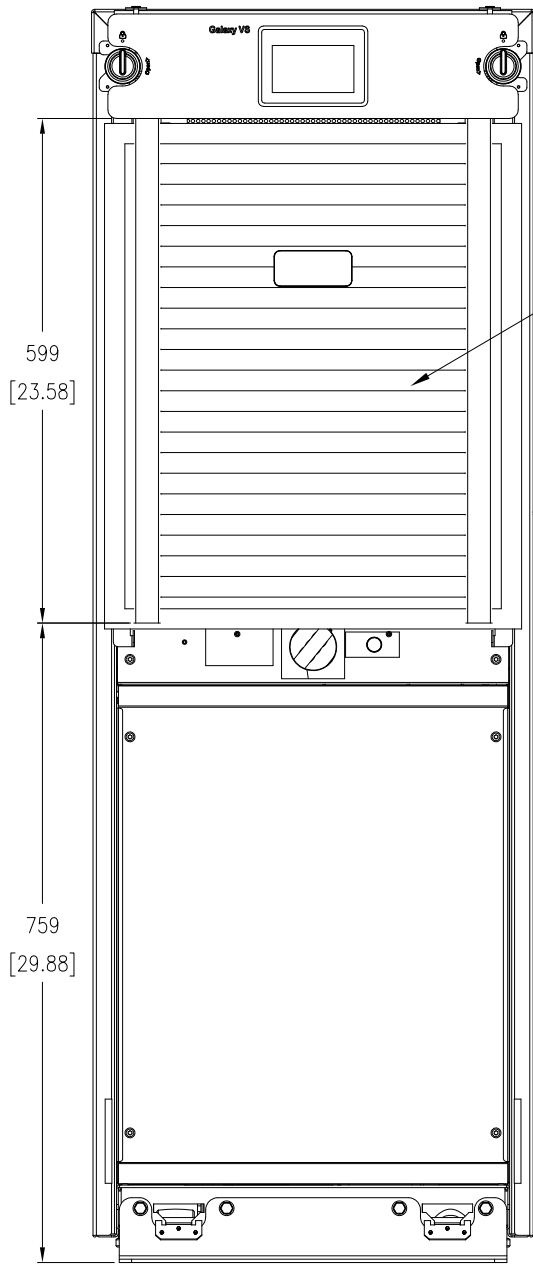
THIS DRAWING AND SPECIFICATIONS HEREIN ARE THE PROPERTY OF SCHNEIDER ELECTRIC AND SHALL NOT BE COPIED, REPRODUCED OR USED IN WHOLE OR IN PART, AS THE BASIS FOR THE MANUFACTURE OR SALE OF ITEMS WITHOUT WRITTEN PERMISSION FROM SCHNEIDER ELECTRIC. THIS DRAWING IS BASED UPON LATEST AVAILABLE INFORMATION AND IS SUBJECT TO CHANGE WITHOUT NOTICE.

Schneider Electric

TITLE: Galaxy VS
UPS 50kW, SCALABLE TO 150kW (FMR COMPLIANT)
Input: 380/400/415V, 3PH, 50Hz, SINGLE/DUAL MAINS
Output: 380/400/415V, 3PH, 50Hz
ANCHORING DETAILS (WITH FMR KIT-GVSOPT043)

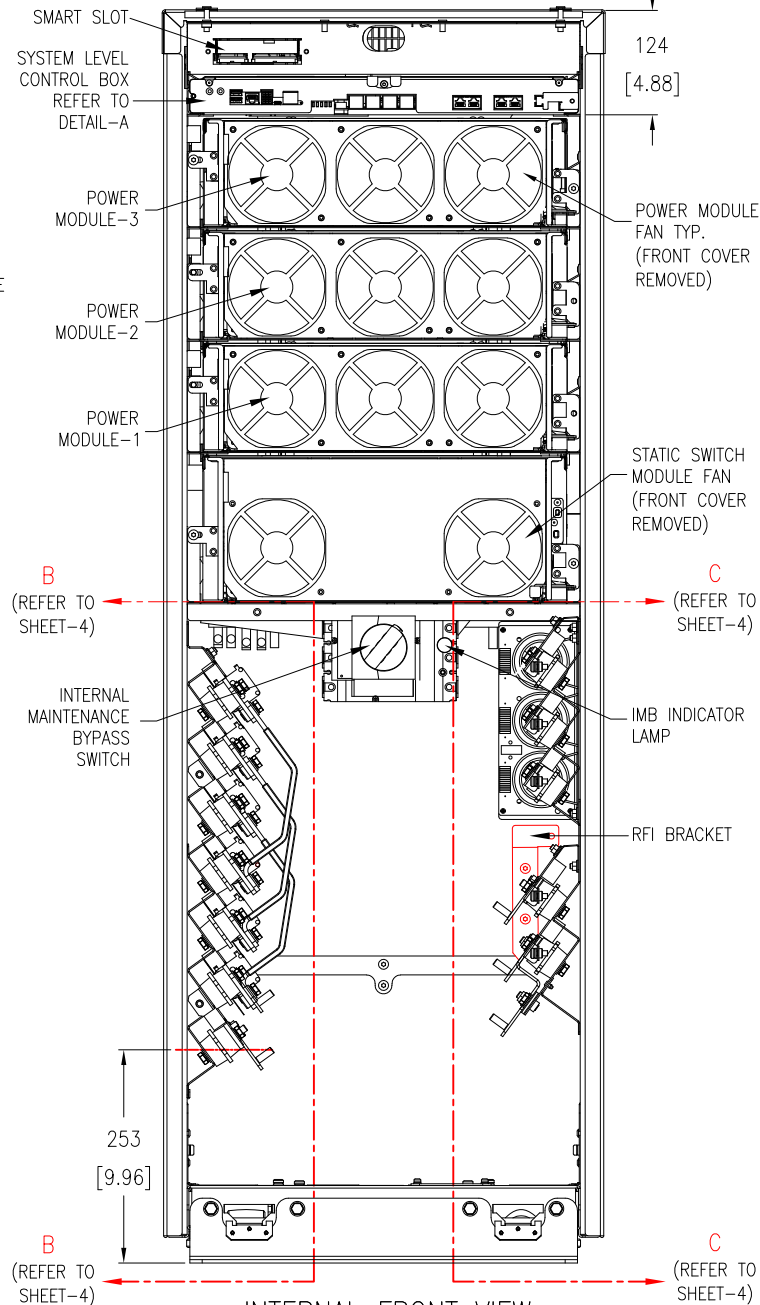
DWG NO: GVSUPS50K150HS-FMR
DRAWN: JAYAPRAKASH
ENGINEER: MUTHUVEL S
APPROVED: TAKESHI YAMAMOTO

REV. 1
17-JAN-23
17-JAN-23
17-JAN-23
FIRST ANGLE PROJECTION

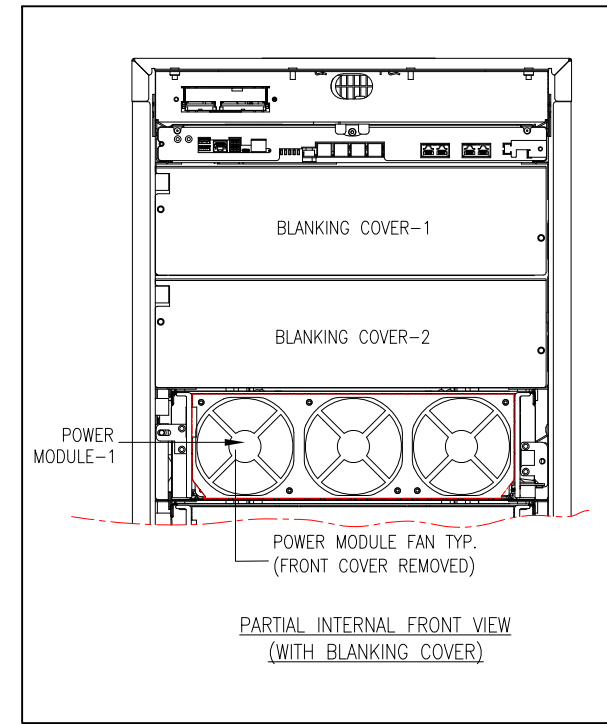


INTERNAL FRONT VIEW WITH IP22 ASSEMBLY

THIS IP22 PART
MOUNTED INSIDE THE
FRONT PANEL
(SHOWN HERE FOR
ILLUSTRATION
PURPOSE ONLY)



INTERNAL FRONT VIEW



POWER MODULE AND BLANKING COVER DETAILS			
SKU NUMBER	UPS RATING (kW)	APPLICABLE POWER MODULES	APPLICABLE BLANKING COVERS
GVSUPS50KHS	50	1	2
GVSUPS60KHS	60	2	1
GVSUPS80KHS	80	2	1
GVSUPS100KHS	100	2	1
GVSUPS120KHS / GVSUPS120KHINS	120	3	0
GVSUPS150KHS / GVSUPS150KHINS	150	3	
GVSUPS50K150KHS	50kW EXPANDABLE TO 60/80/100/120/150kW (REFER ABOVE RESPECTIVE ROW BASED ON EXPANSION)		

NOTES:

1. INSTALLATION SHALL COMPLY WITH ALL APPLICABLE NATIONAL AND LOCAL ELECTRICAL REGULATIONS.
2. REFER TO PRODUCT DOCUMENTATION FOR ADDITIONAL DETAILS PRIOR TO INSTALLATION & SITE PREPARATION WORK.
3. ALL DIMENSIONS ARE IN MILLIMETERS [INCHES] ALL DIMENSIONS EXCLUDES SCREW PROJECTIONS OUTSIDE THE ENCLOSURE.
4. SOME STRUCTURAL DETAILS HAVE BEEN OMITTED FOR THE PURPOSE OF CLARITY.

THIS DRAWING AND SPECIFICATIONS HEREIN ARE THE PROPERTY OF SCHNEIDER ELECTRIC AND SHALL NOT BE COPIED, REPRODUCED OR USED IN WHOLE OR IN PART, AS THE BASIS FOR THE MANUFACTURE OR SALE OF ITEMS WITHOUT WRITTEN PERMISSION FROM SCHNEIDER ELECTRIC. THIS DRAWING IS BASED UPON LATEST AVAILABLE INFORMATION AND IS SUBJECT TO CHANGE WITHOUT NOTICE.

Schneider Electric

TITLE: Galaxy VS
UPS 50kW, SCALABLE TO 150kW (FMR COMPLIANT)
Input: 380/400/415V, 3PH, 50Hz, SINGLE/DUAL MAINS
Output: 380/400/415V, 3PH, 50Hz
INTERNAL VIEWS (WITH FMR KIT-GVSOPT043)

DWG NO: GVSUPS50K150HS-FMR

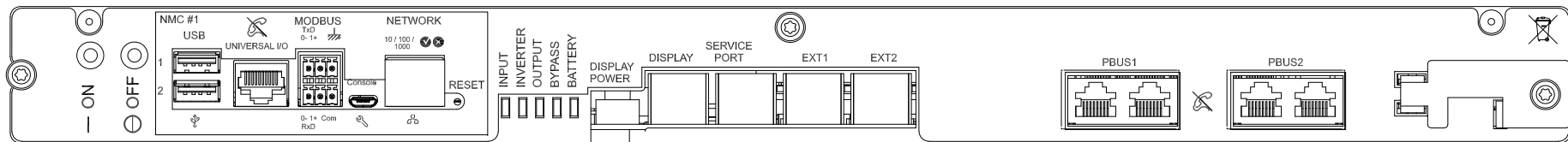
REV. 1

DRAWN: JAYAPRAKASH 17-JAN-23
ENGINEER: MUTHUVEL S 17-JAN-23

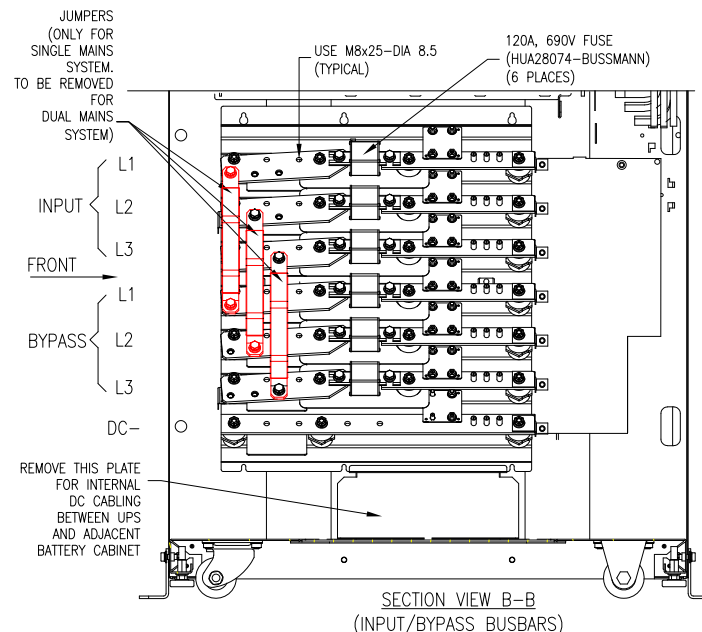
FIRST ANGLE PROJECTION

PROJECT: SUBMITTAL DRAWINGS SHEET 4 OF 5

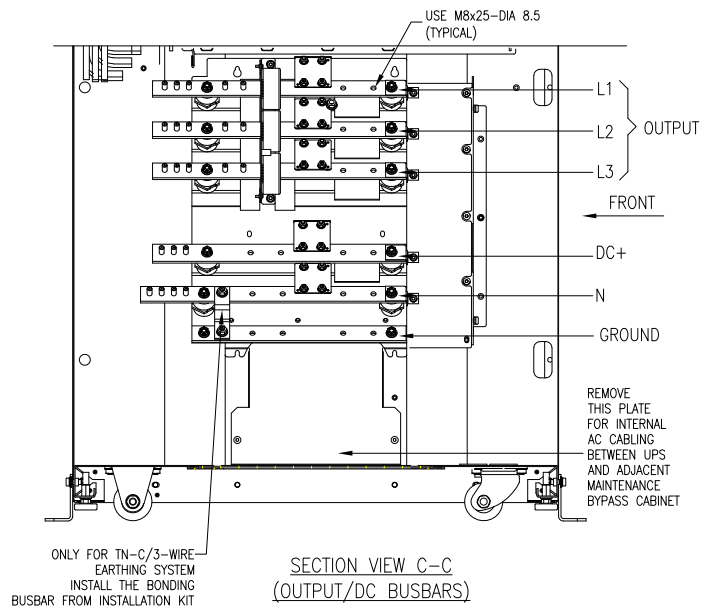
APPROVED: TAKESHI YAMAMOTO 17-JAN-23



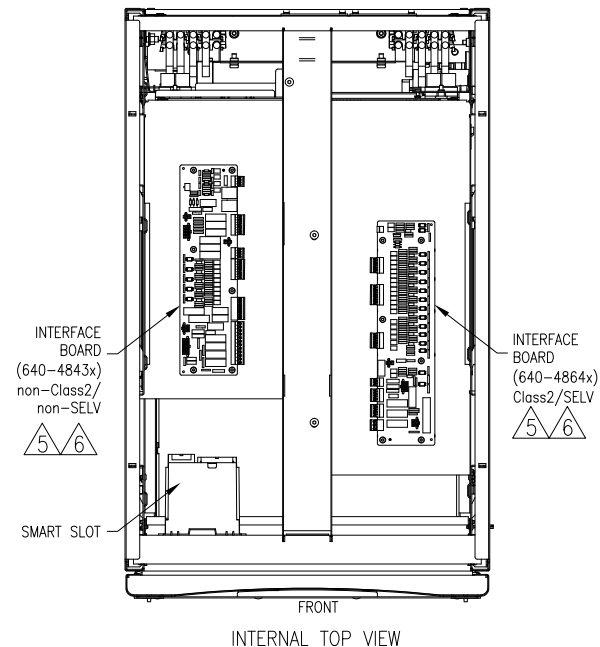
5 DETAIL-A (SYSTEM LEVEL CONTROL BOX-ENLARGED VIEW)



SECTION VIEW B-B
(INPUT/BYPASS BUSBARS)



SECTION VIEW C-C
(OUTPUT/DC BUSBARS)



INTERNAL TOP VIEW

TABLE-1

POWER MODULE AND BLANKING COVER DETAILS			
SKU NUMBER	UPS RATING (kW)	INPUT FUSE DETAILS	BYPASS FUSE DETAILS
GVSUPS50KHS	50	400A, 500V (MAKE & MODEL: MERSEN D30191)	315A, 690V (MAKE & MODEL: MERSEN A330188)
GVSUPS60KHS	60		
GVSUPS80KHS	80		
GVSUPS100KHS	100		
GVSUPS120KHS / GVSUPS120KHINS	120	550A, 660V (MAKE & MODEL: MERSEN PC30UD69V550A)	
GVSUPS150KHS / GVSUPS150KHINS	150		
GVSUPS50K150KHS	50kW EXPANDABLE TO 60/80/100/120/150kW (REFER ABOVE RESPECTIVE ROW BASED ON EXPANSION)		

NOTES:

1. INSTALLATION SHALL COMPLY WITH ALL APPLICABLE NATIONAL AND LOCAL ELECTRICAL REGULATIONS.
2. REFER TO PRODUCT DOCUMENTATION FOR ADDITIONAL DETAILS PRIOR TO INSTALLATION AND SITE PREPARATION WORK.
3. ALL DIMENSIONS ARE IN MILLIMETERS [INCHES].
4. SOME STRUCTURAL DETAILS HAVE BEEN OMITTED FOR THE PURPOSE OF CLARITY.
5. FOR INTERFACE DETAILS REFER TO SYSTEM WIRING DIAGRAM GVS20K150HS-WD.
6. FOR LATEST BOARD PART NUMBER CONTACT SCHNEIDER ELECTRIC.
7. THE SYSTEM IS DESIGNED TO SUPPORT MAXIMUM 150sqmm CABLES.

THIS DRAWING AND SPECIFICATIONS HEREIN ARE THE PROPERTY OF SCHNEIDER ELECTRIC AND SHALL NOT BE COPIED, REPRODUCED OR USED IN WHOLE OR IN PART, AS THE BASIS FOR THE MANUFACTURE OR SALE OF ITEMS WITHOUT WRITTEN PERMISSION FROM SCHNEIDER ELECTRIC. THIS DRAWING IS BASED UPON LATEST AVAILABLE INFORMATION AND IS SUBJECT TO CHANGE WITHOUT NOTICE.

Schneider Electric

TITLE: Galaxy VS
UPS 50kW, SCALABLE TO 150kW (FMR COMPLIANT)
Input: 380/400/415V, 3PH, 50Hz, SINGLE/DUAL MAINS
Output: 380/400/415V, 3PH, 50Hz
SECTION VIEWS & DETAILS (WITH FMR KIT-GVSOPT043)

DWG NO: GVSUPS50K150HS-FMR
DRAWN: JAYAPRAKASH
ENGINEER: MUTHUVEL S
APPROVED: TAKESHI YAMAMOTO

REV. 1
17-JAN-23
17-JAN-23
17-JAN-23
FIRST ANGLE PROJECTION